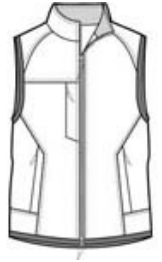


Port Authority® Challenger™ Vest J355

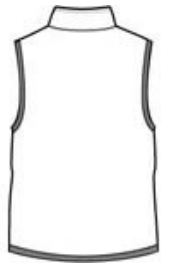


The versatile Challenger™ Vest has spandex-trimmed armholes and hem for long-wearing durability.

- Teklon® nylon shell
- Heavyweight fleece lining for extra warmth
- Double-needle stitching throughout
- Slash zippered pockets, interior zippered pocket
- Port Pocket™ for easy embroidery access
- Binding at armholes and hem
- Due to a Tyvek inner lining, a silk screen or heat transfer treatment is not recommended for Goldenrod/True Black.

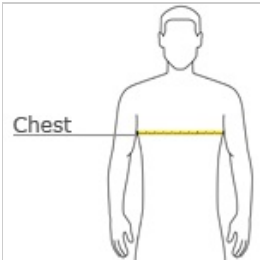


front



back

HOW TO MEASURE



CHEST
With arms down at sides, measure around the upper body, under arms and over the fullest part of the chest.

SIZE CHART

	XS	S	M	L	XL	2XL	3XL	4XL
Chest	32-34	35-37	38-40	41-43	44-46	47-49	50-53	54-57

COLOR INFORMATION



Goldenrod/True Black
PMS 137 C



Steel Grey/True Black
PMS 7540 C



True Black/True Black
PMS NTR BLACK



True Hunter/True Black
CPMS 446 C



True Navy/True Navy
PMS 7546 C



True Red/True Black
PMS 201 C



True Royal/True Black
PMS 7687 C