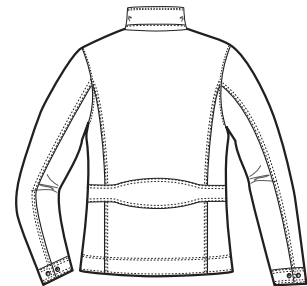


# Ladies Successor™ Jacket

PORT | AUTHORITY®



Front



Back

L701

- \* 100% polyester with PU coating
- \* Polyester lining throughout
- \* Stowaway hood in cadet collar with hook and loop closure
- \* Black contrast on collar
- \* Interior zippered pocket

Care Instructions:  
Machine wash cold  
Do not bleach  
Do not dry clean  
Do not tumble Dry

## Finished Measurements in Inches

Size	XS	S	M	L	XL	XXL	Plus 1X	Plus 2X
Chest	37"	39"	41"	44"	47"	50"	53"	58"
Body	24"	25"	26"	27"	28"	28 1/2"	29"	30"
Sleeve	31 3/4"	32 3/4"	33 3/4"	34 3/4"	35 1/4"	36 1/4"	36 3/4"	36 3/4"

Chest width measured 1" below arm hole. Body length measured from high point shoulder seam to hem.  
Sleeve length measured from shoulder seam to hem.

## Colors

	Black
	True Navy
	Stone
	State Blue
	Engine Red
	Dark Chocolate

Please Note:  
Colors shown are approximate and for reference only. For closest match see PMS colors, or for exact match, returnable samples and grommited samples are available.

## Color Chart

Colors	Black	True Navy	Stone	State Blue	Engine Red	Dark Chocolate
Textile PMS	No Match	No Match	No Match	No Match	No Match	No Match
General PMS	ProBlk C	432C	7536 C	648 C	207 C	No Match